

COLD.W

Comfort creator

Keeping your home comfortable by cooling and dehumidifying the supply air. COLD.W is a water duct heat exchanger intended to be used with a central MVHR unit or standalone fan.

Universal compatibility

COLD.W can be used with all MVHR units up to 600m³/h and heat pumps providing cold water.

Simple installation

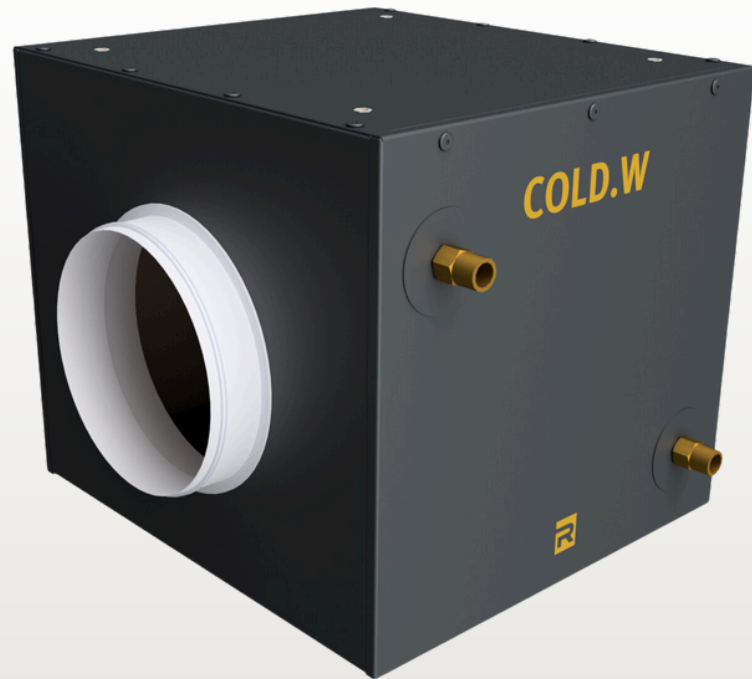
Large 200mm air connections with gaskets ensure simple installation and air-tight connections. Unit is universal in terms of airflow direction and can be installed with piping connections on the left or right side according to the air flow direction.

Robust design

Small and compact, painted metal housing with internal insulation and fixation points.

Blow free

A ventilation duct system is used to distribute cold air into rooms in precise amounts. Due to the lower noise level and low air speed, this method provides a very comfortable climate compared to conventional air conditioning systems.



INSTANT COLD AIR

PERFECT INDOOR CLIMATE

BLOW FREE – HIGH COMFORT

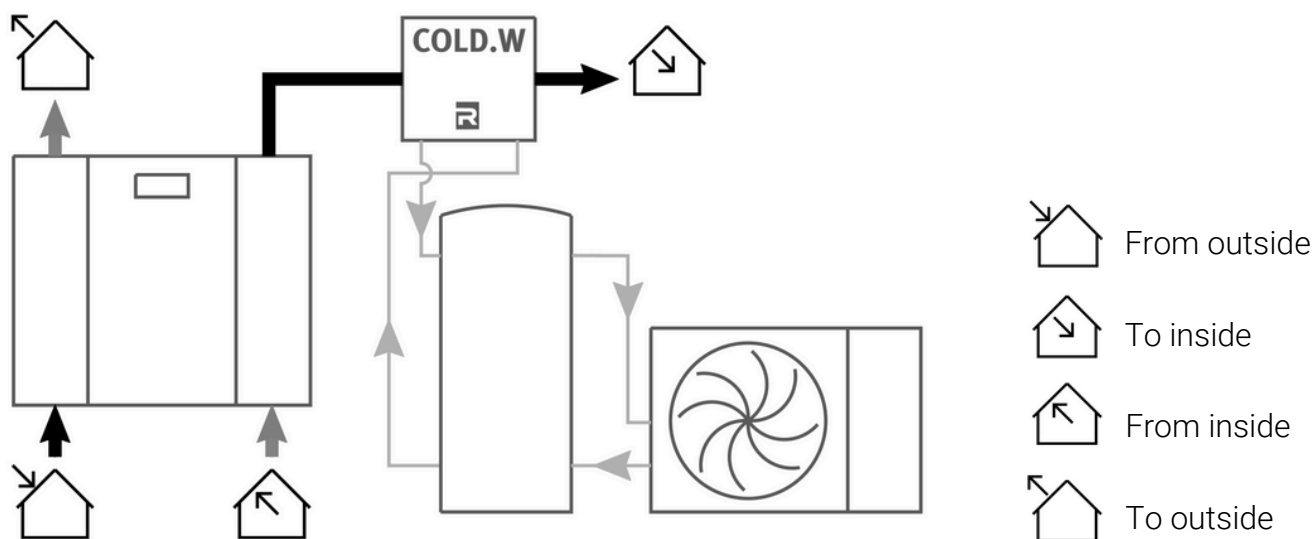
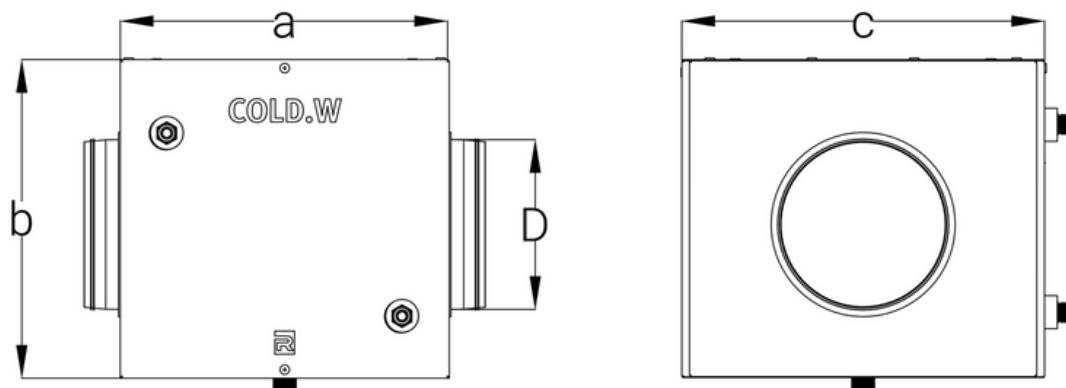
COLD.W is best suited for combination with hydronic systems – heat pumps. When supplied with cold water (7°C) COLD.W greatly reduces the temperature of the air, but more importantly, it dehumidifies the air. COLD.W can therefore be used as the only cooling system or, when more sensible cooling power is required in combination with radiant cooling. Since temperatures of the air leaving COLD.W unit can be below 10°C, supply air distribution system must be insulated with closed cell insulation to prevent condensation formation on the outside of the ducts and elements of distribution system.

COLD.

Powerful cooling for your MVHR system.

Weight and dimensions (a x b x c)	16 kg (384x374x425mm)
Air connections (diameter)	200mm
Piping connections	1/2"
Condensate drain connection	DN32
Cooling power (W7/10, IN 600m ³ /h @27°C/60%rh)*	3.3kW
Heating power (W45/40, IN600m ³ /h @20°C/30%rh)*	3.5kW
Max. airflow	600m ³ /h
Max. medium temperature	60°C
Min. medium temperature	0°C
Working/test medium pressure	16/18bar

*Water flow = 612l/h



Principal schematics of COLD.W implementation.

SALE / INSTALLATION / SERVICE



Remty-R d.o.o.,
 Cesta II. grupe odredov 54,
 1261 Ljubljana - Dobrunje, Slovenia
www.cold-air.eu